

NEXON CAGE PORTFOLIO*

Wide range of sizes and lordotic angulation options to achieve good sagittal balance

Width: 22 mm
Lordotic angle: 10°
Lengths: 45, 53 and 60 mm
Heights: 8 – 14 mm in 2 mm increments

Width: 22 mm
Lordotic angle: 15°
Lengths: 45, 53 and 60 mm
Heights: 10 – 16 mm in 2 mm increments

Width: 22 mm
Lordotic angle: 30°
Length: 53 and 60 mm
Heights: 16 – 22 mm in 2 mm increments

* The portfolio may vary by country

Screw option available
for cage height 12 mm or higher

Screw (Ti6AL4V)

Diameter: 3.3 mm
Length: 35 mm

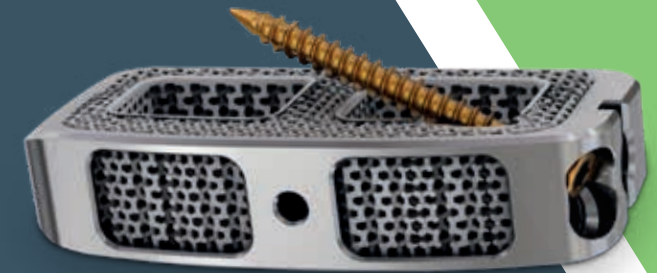
MANUFACTURED BY

NEXON
MEDICAL

NEXON MEDICAL AG
Hauptstrasse 75
6260 Reiden / Switzerland
Tel. +41 62 758 16 16
Fax +41 62 758 16 18
info@nexonmedical.ch
www.nexonmedical.ch

901.200.004 / 11-2019 / V2.0

NEXON
MEDICAL



NEXON LATERAL CAGE SYSTEM

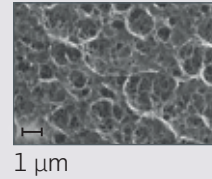
High Primary and Secondary Stability
for the Lateral Access

High primary and secondary stability thanks to bone-friendly, porous titanium surface.



DESIGN FEATURES

- 1 Good bone on-growth because of bone-friendly material: porous titanium with very rough surface (Ti6Al4V).



K. Alvarez et al., Materials 2009, 2(3), 790-832
A. Palmquist et al., J Biomaterials Appl.;27(8), 2011; 1003-26

- 2 Large fusion area based on big bone graft windows offering additional space for bone substitute.

- 3 Improved visibility under x-ray* and reduced artefacts** under CT/MRI through open geometry.

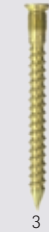


* compared to PEEK
** compared to solid titanium cages

- 4 Protection of the surrounding structures as a result of smooth surfaces on the implant's side.

- 5 Controlled insertion of the cage thanks to a strong connection to the implant holder.

- 6 Additional stability during rearrangement of patients thanks to optional screw placement.



- 1 Locking head mechanism for more primary stability *
- 2 Double lead thread for reduced turns to insert screw
- 3 Self-tapping tip for faster placement

* does not replace final fixation

INSTRUMENTS

Efficient surgical technique based on easy-to-use set of instruments.

Instrument Set for Discectomy



Instrument Set for Cage Insertion

